



ALUMATE - Architectural Product

# Workable Designs, Reliable Systems

ALUMADE Australia Pty, Ltd



## ABOUT

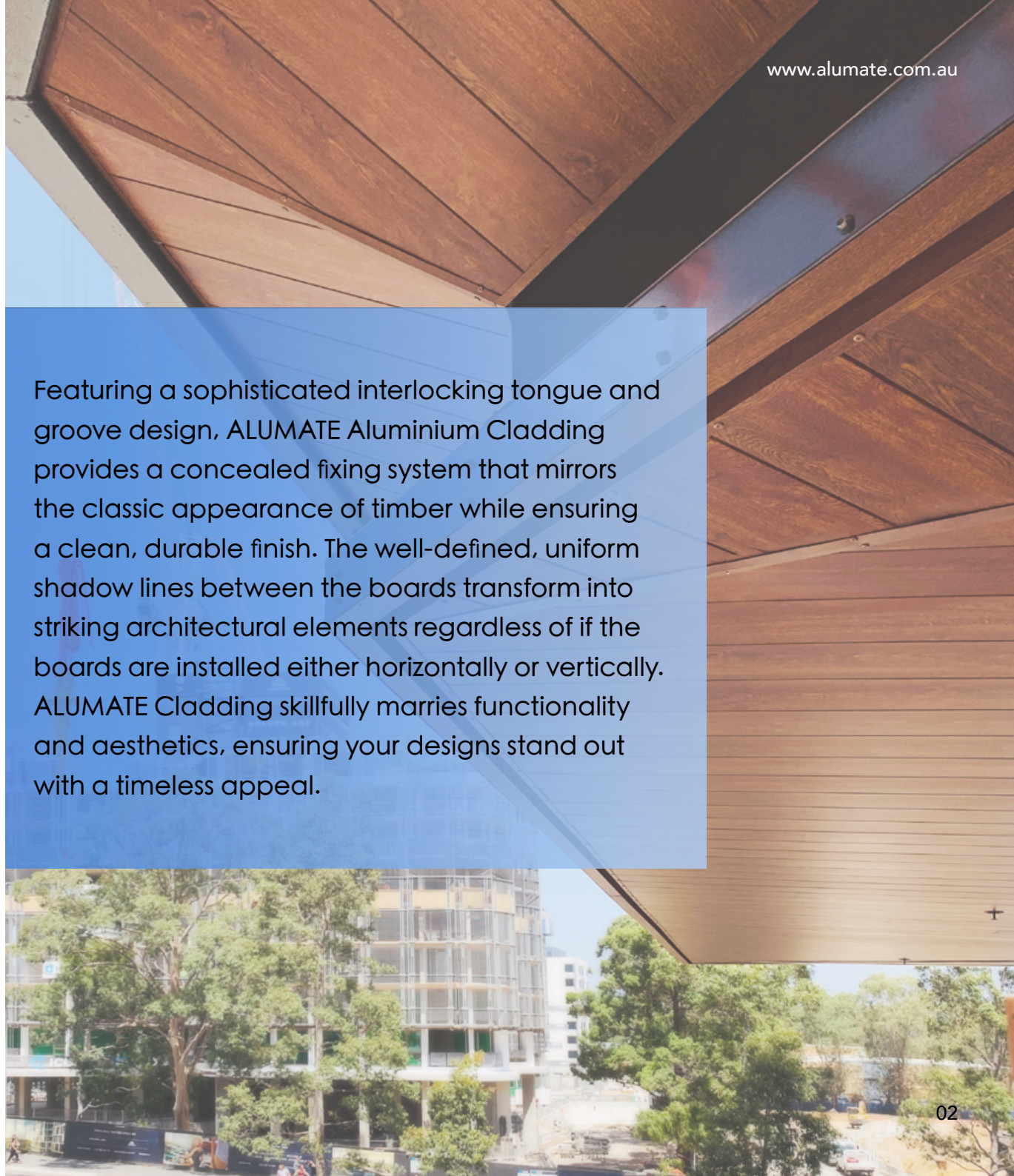
“ **ALUMATE** offers bespoke product systems, meticulously crafted to align with any architectural design vision. Our diverse range of finishes, including **timber-look aluminium, powder coating,** and **anodising,** ensures versatility for both interior and exterior applications. With **ALUMATE,** your design aspirations take a tangible form, seamlessly merging aesthetics and functionality. ”

## ALUMATE CLADDING/SOFFIT SYSTEM

The ALUMATE aluminium cladding system is a revolutionary solution that elevates the aesthetic appeal of outdoor facades, soffits, as well as internal walls and ceiling linings. Perfectly suited for both new constructions and renovations, ALUMATE is the preferred choice for residential and commercial applications seeking a cladding product that requires low maintenance, is highly durable, non-combustible and features an authentic wood grain finish.

Available in an array of widths, ALUMATE aluminium cladding offers the advantage of straightforward installation methods, making it remarkably adaptable to any design specification and application. Whether oriented vertically or horizontally, ALUMATE aluminium cladding delivers a sleek finish characterised by consistently spaced shadow lines, thereby enhancing the visual harmony of your architectural design.

With ALUMATE you are choosing more than a product; you are selecting a solution that blends superior functionality with exceptional aesthetic appeal.



Featuring a sophisticated interlocking tongue and groove design, ALUMATE Aluminium Cladding provides a concealed fixing system that mirrors the classic appearance of timber while ensuring a clean, durable finish. The well-defined, uniform shadow lines between the boards transform into striking architectural elements regardless of if the boards are installed either horizontally or vertically. ALUMATE Cladding skillfully marries functionality and aesthetics, ensuring your designs stand out with a timeless appeal.





## Castellated Cladding in Cedar College

Determining the precise colour and finish was pivotal to the distinctive castellated design of the project. The architect's innovative blend of sandstone with a timber-like finish not only infused character into the façade but also served to soften the overall appearance of the building.

At ALUMATE, we utilise an Italian heat transfer technology for our wood grain finishes. Using only the highest quality powders, inks, and equipment, to craft incredibly lifelike wood-grain finishes. Additionally, our use of heat transfer technology enhances the durability of the surface coating, ensuring its longevity.

ALUMATE's ALC18025 castellated cladding in the 'American Oak' woodgrain finish was the chosen product for this project. With ALUMATE, you get the perfect blend of aesthetic appeal and functional durability.





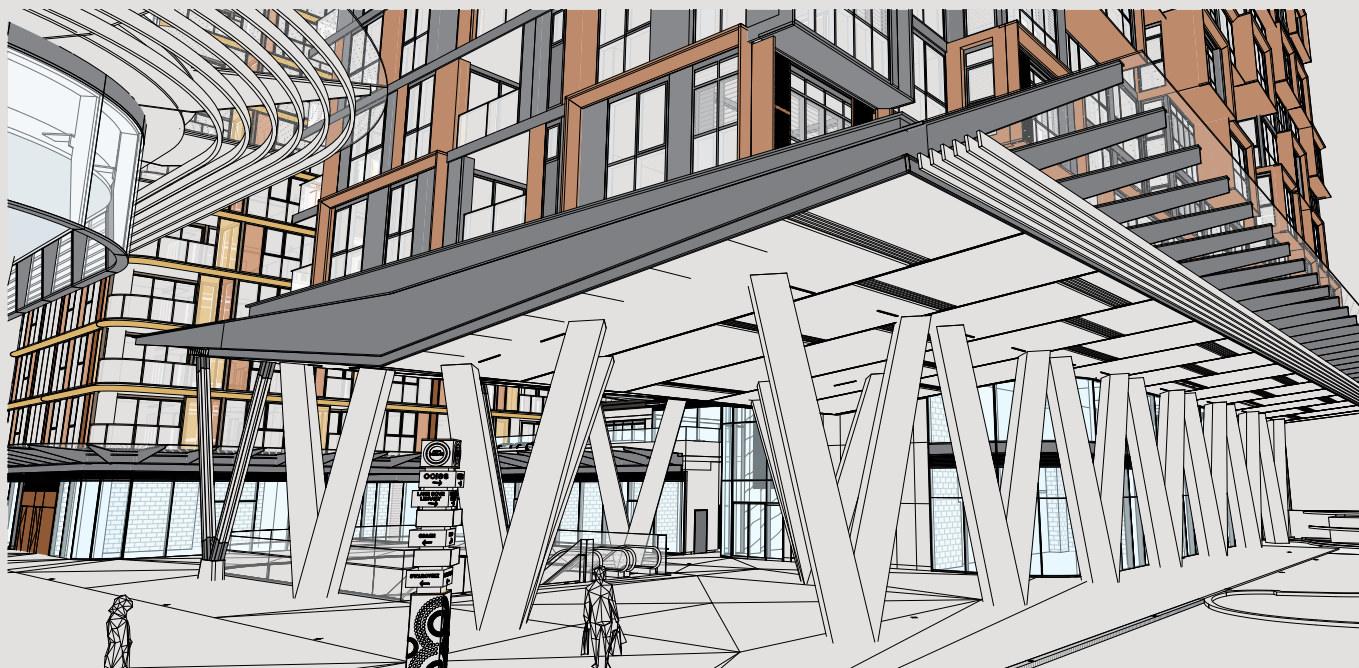
## 88 Christie Street by PTW Architects

Developed by JQZ, 88 Christie Street is the epitome of luxury lifestyle in North Sydney. PTW and JQZ chose ALUMATE's Custom Aluminium Soffit Solutions to create a visionary precinct and truly exceptional living environments.



ALUMATE's in-house designers ensured that each square inch of the soffit is fully custom-made with a clear objective before the colour selection & fabrication. For this project, the team was able to produce a customised finish to match the specific design intent for the building to emphasise the vibrant energy of the retail precinct.

Despite the combinations of large and uniquely shaped panels, ALUMATE's fabrication, logistics and design team's seamless collaboration assured for precise and efficient installation.



Artist's impression image by PTW Architects







## Strathfield Avenue Timber Look Soffit

ALUMATE Aluminium soffit and Cladding are elegantly incorporated into this residential project by Vision Group Architects, creating an exterior that blends uniformity and warmth.



This two-storey project boasts a large and continuous soffit that stretches along the exterior of the building. ALUMATE's woodgrain aluminium enhances the aesthetic feeling of the building whilst constructing a beautiful and organised layout.

These unique timber elements situated in the pleasant suburbs of Strathfield allow the property to stand-out amongst the neighbouring homes.



## Crows Nest Sierra Apartments By FIGGIS + JEFFERSON TEPA

Situated amongst the bustling streets of Crows Nest, the modern Sierra Apartments was designed by FIGGIS + JEFFERSON TEPA and completed by Honglin Construction.



ALUMATE's flexibility complimented FIGGIS+JEFFERSON TEPA's architectural design of the clover-leaf soffit. The natural American Oak timber-look cladding with curved edging blends softness with urban styling.

Practically maintenance free, it is the perfect choice for any multi-residential construction. ALUMATE Aluminium Cladding provides the safety of non-combustibility whilst the wood-grain finish provides a warm appearance and feeling.







WSU BANKSTOWN CAMPUS  
Architect: Lyons / HDR Architecture  
Builder: Built  
Installer: Buildup Interior

## CASSETTE PANEL SOFFIT BY ALUMATE

ALUMATE's prefabricated systems are specifically engineered as a Rain Screen which acts as the ventilated facade of the building.



ALUMATE's unique profile systems merges architectural intent with smart engineering to create sophisticated building facades free of visible fixings.

## WSU In Bankstown Designed by Lyons Architecture







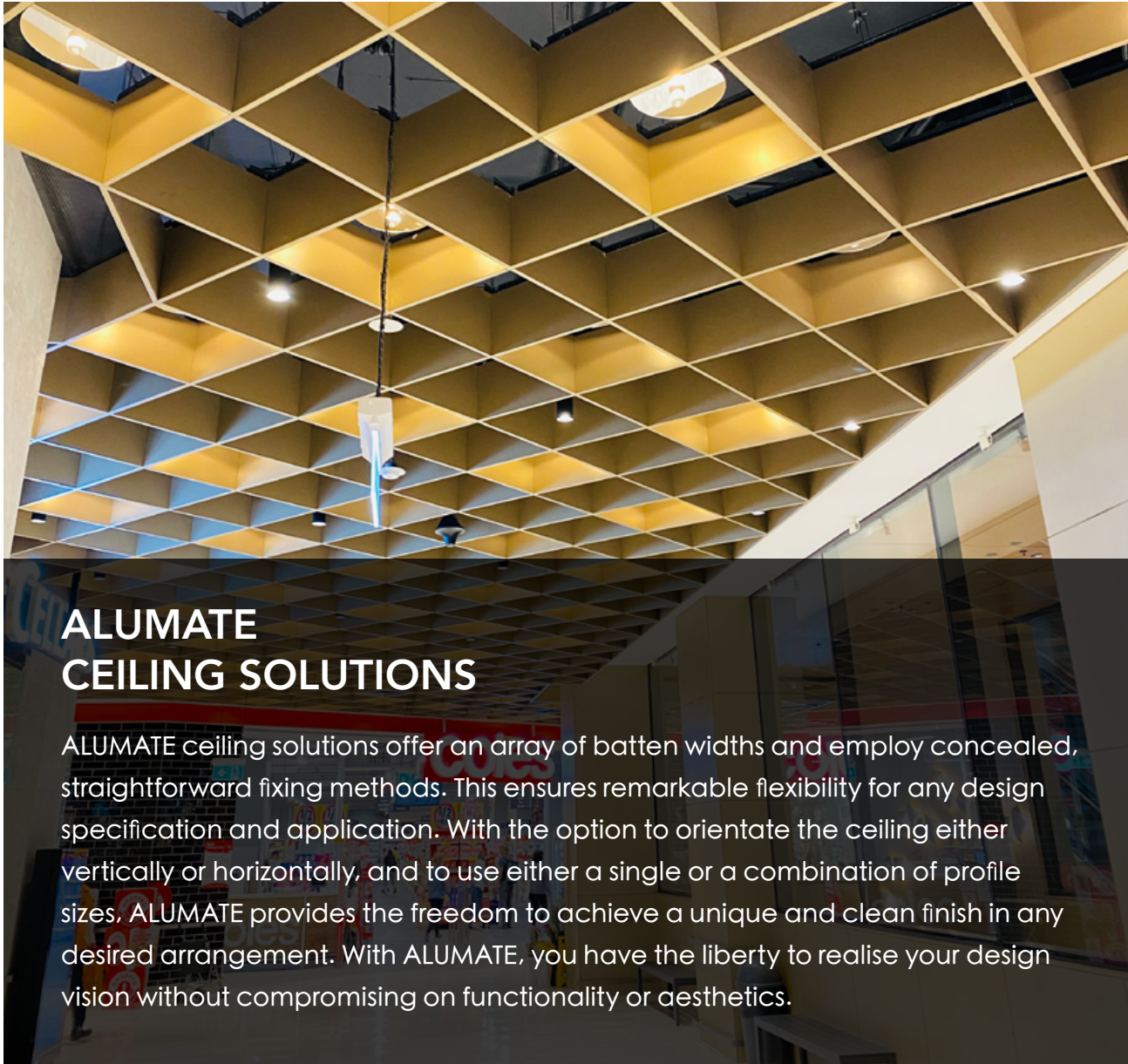
**WSU BANKSTOWN CAMPUS**  
Architect: HDR/Lyons Architecture  
Builder: Built  
Installer: Buildup Interior

## SEAMLESS JOINT SYSTEM

ALUMATE's Aluminium Seamless Joint Panel system is a cutting-edge cladding solution renowned for its impeccable aesthetics and superior resilience. It features a unique design that allows for an unbroken and smooth facade, enhancing the architectural allure of any structure.

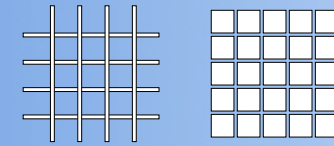






## ALUMATE CEILING SOLUTIONS

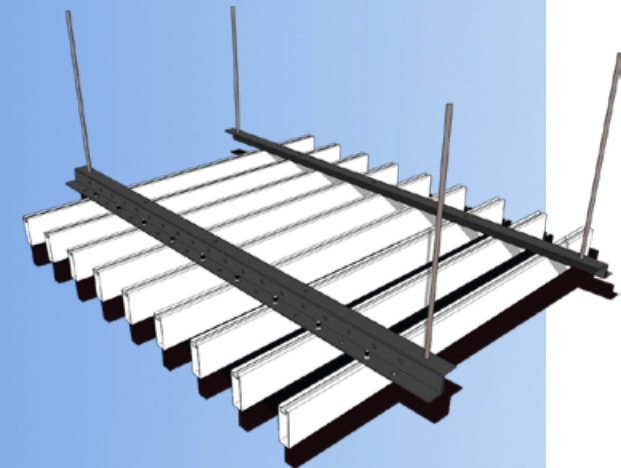
ALUMATE ceiling solutions offer an array of batten widths and employ concealed, straightforward fixing methods. This ensures remarkable flexibility for any design specification and application. With the option to orientate the ceiling either vertically or horizontally, and to use either a single or a combination of profile sizes, ALUMATE provides the freedom to achieve a unique and clean finish in any desired arrangement. With ALUMATE, you have the liberty to realise your design vision without compromising on functionality or aesthetics.



*Cube Ceiling*



*Lock-in & Slatted Ceiling*





## Slatted Ceiling

The deep garnet, slatted finish evokes a sense of community, encouraging social interaction and cultural exchange. The wood-grained appearance imbues a sense of warmth and belonging, perfectly encapsulating the evolving identity of Parramatta.

The lightweight solutions offered by ALUMATE Aluminium Slatted Ceiling enabled the designers to effectively materialise their vision, resonating with the identity of Parramatta's brand new community and civic centre. With ALUMATE, designs are not just ideas - they become a part of the community's fabric.



## Parramatta Square City's Civic Centre

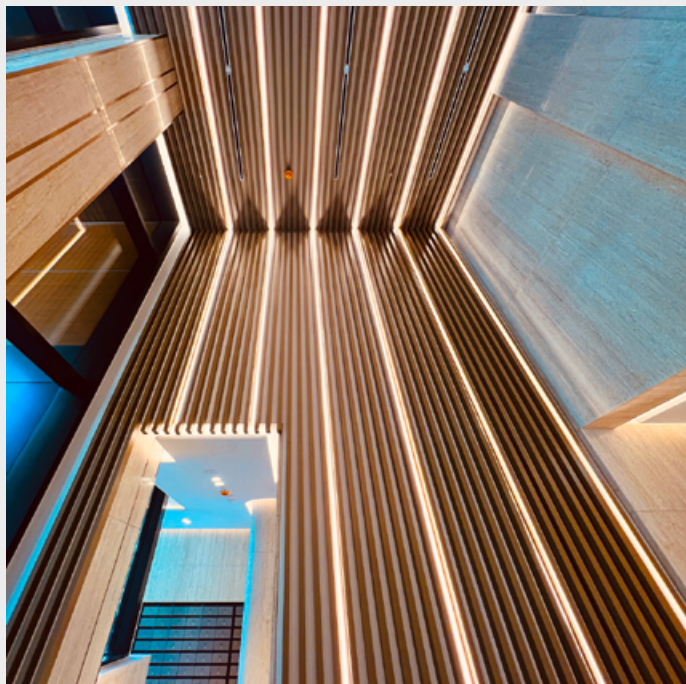
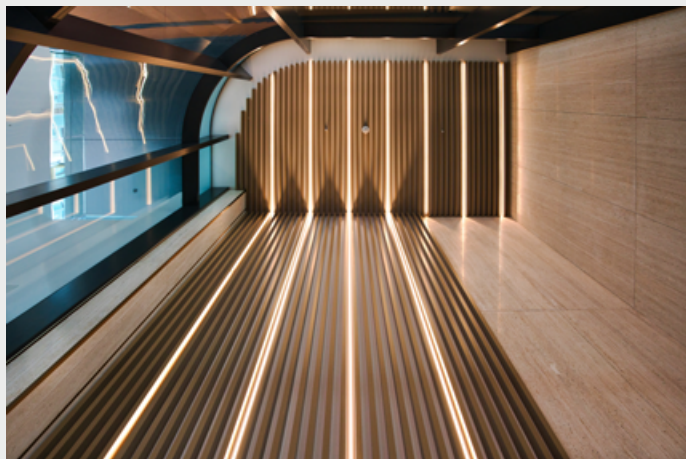
The versatility of ALUMATE Aluminium Battens allowed the architect to create a ceiling which celebrates the rich culture and unique heritage of the city's civic centre.

Photo by DesignInc

Photo by DesignInc



**Location:** 88 Christie Street, St Leonards, NSW  
**Architect:** PTW Architects  
**Developer:** JQZ  
**Product:** ALUMATE Lock-in Ceiling Batten



Artist's impression image by HENDERSON & CO.

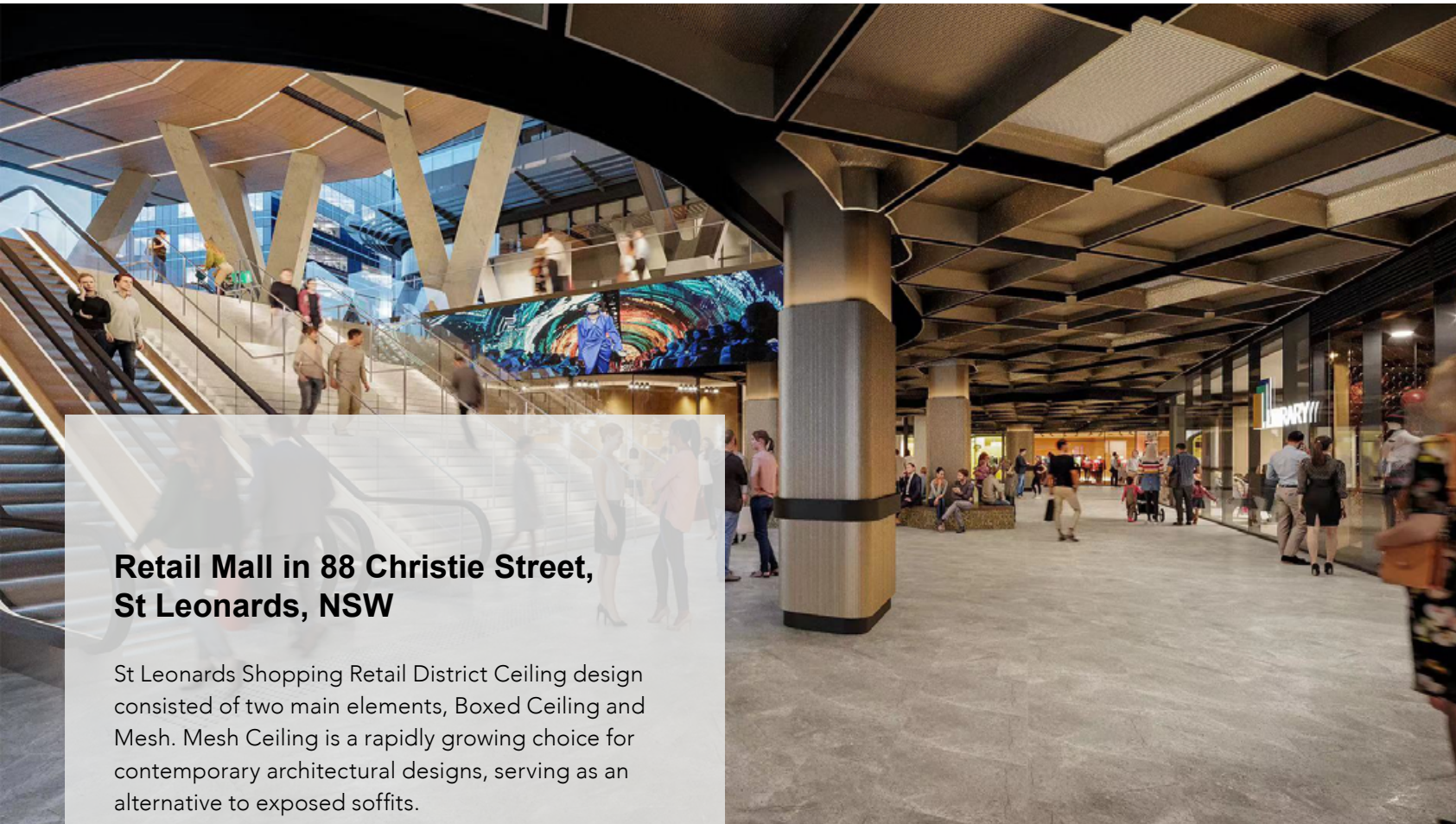
### **Lock-in Ceiling Batten**

Designed by PTW architects, ALUMATE's custom lock-in ceiling batten were specifically designed to complete the artist's impressions for lineal continuity across multiple planes.

### **'Fresh Gold' finish Accentuates Extravagance.**

The vertical screening elements enfold the curvatures of the lobby which when juxtaposed by the natural marble grains create a sense of flow and tranquillity.





## Retail Mall in 88 Christie Street, St Leonards, NSW

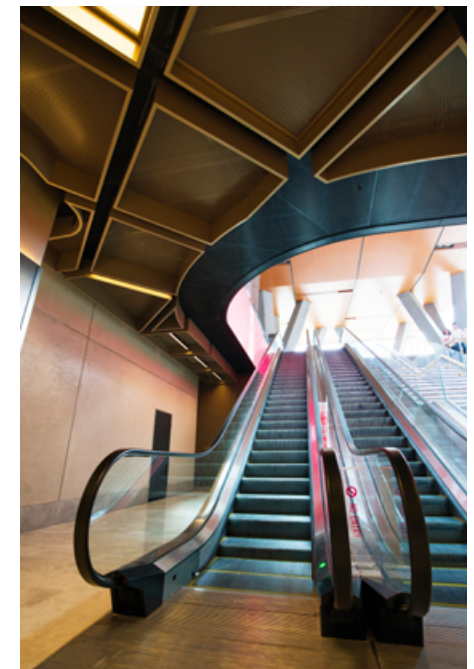
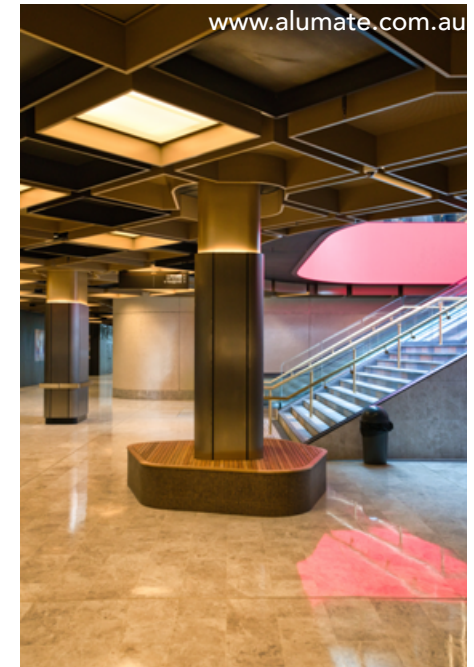
St Leonards Shopping Retail District Ceiling design consisted of two main elements, Boxed Ceiling and Mesh. Mesh Ceiling is a rapidly growing choice for contemporary architectural designs, serving as an alternative to exposed soffits.

ALUMATE worked closely with PTW's designers and project contractors to deliver the desired aesthetic and functional outcomes for this project. ALUMATE provided numerous patterns and finishes to meet the specific design requirements and specifications for this job.

*Artist's impression image by PTW Architects*

## Custom-made Box Ceiling

Our custom-made ceiling profiles can be crafted to accommodate any project design or shape. Our team, with their expertise and experience, can turn even the most ambitious project vision into a reality.





# ALUMATE Capabilities Showcase

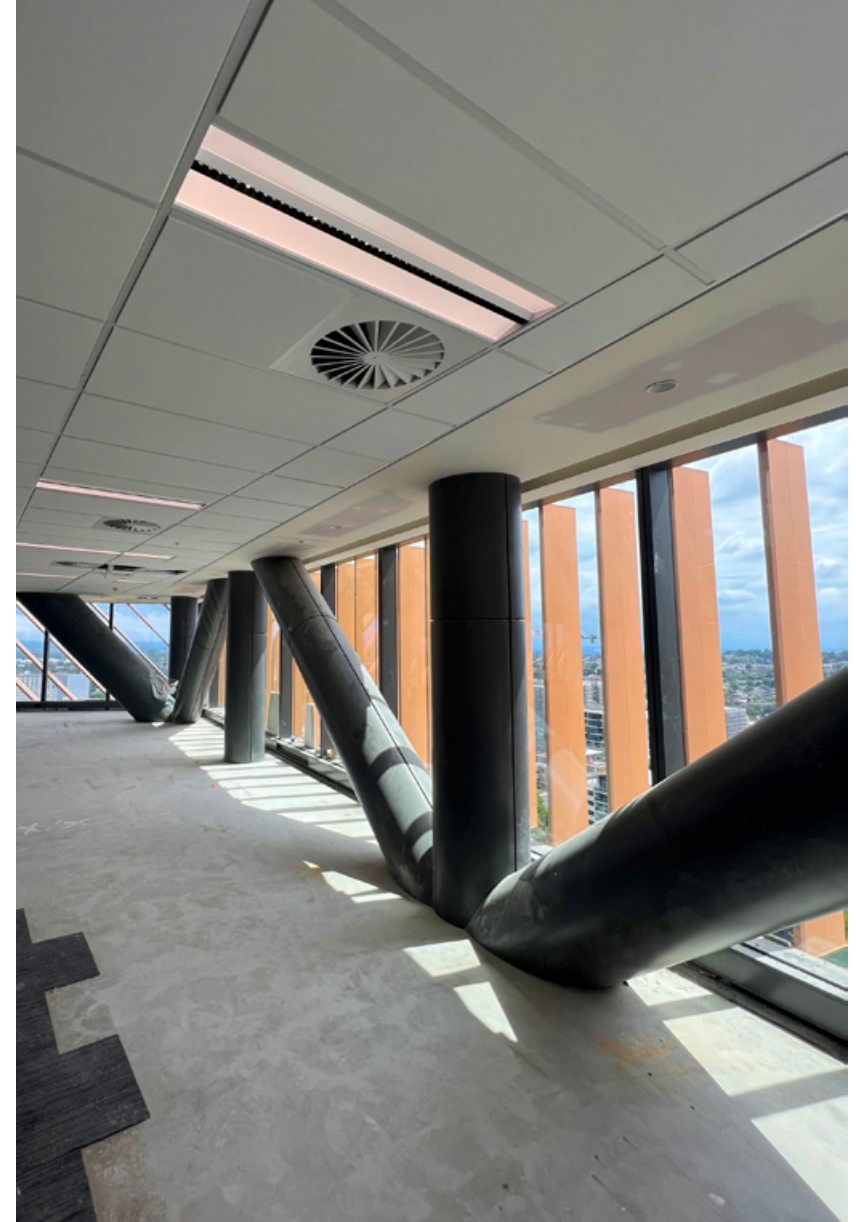




ALUMATE Mesh Ceiling Panel



ALUMATE Seamless Joint Ceiling Panel  
(Max 6000mm)



ALUMATE Curved (Column) Cladding

## WSU In Bankstown, NSW

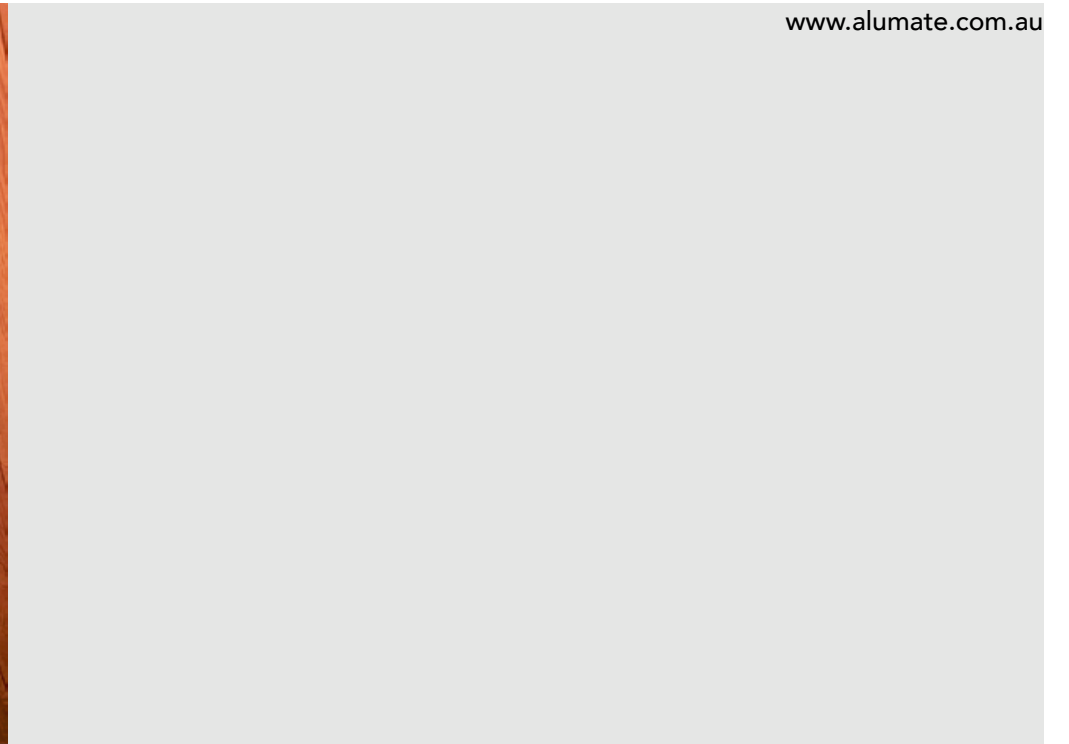




## PRIME Apartment Macquarie Park

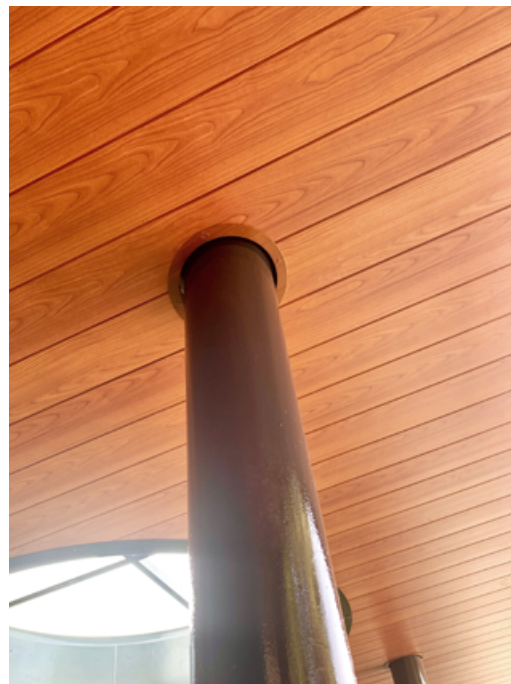
ALUMATE Soffit Cladding





# CHILDCARE Rocky Point Rd, Kogarah

ALUMATE Soffit Cladding







**LOUVRE MIXED**  
**7 Sir Thomas Mitchell Dr, Bondi**

ALUMATE Louvres







## OXFORD SQUARE

ALUMATE Cassette Panel





[alumate.com.au](http://alumate.com.au)  
[enquiry@alumate.com.au](mailto:enquiry@alumate.com.au)

