

Capability Statement

ALUMATE - ARCHITECTURAL PRODUCT

Company Overview:

ALUMATE is Australia's leading supplier of high-quality aluminium and metal solutions, with a strong technical team led by experts with over 50 years of experience in design and manufacturing of lightweight aluminium and other metallic materials.

ALUMATE is committed to innovation and sustainability. We have consistently demonstrated expertise in designing, manufacturing, and delivering aluminium and metallic products that meet the unique demands of diverse architectural and construction projects.

Core Competencies:

1. **Innovative Product Design:** With decades of experience, ALUMATE's design team excels at creating innovative and sustainable aluminium solutions tailored for all commercial, public, infrastructure, government, education, health, retail, residential, recladding, and renovation construction projects.
2. **Advanced Manufacturing Techniques:** ALUMATE employs state-of-the-art manufacturing processes, ensuring consistent quality, precision, and adherence to global standards across all product lines.
3. **Custom Solutions:** Recognising that every project has unique requirements, ALUMATE prides itself on its ability to offer bespoke aluminium solutions that meet specific client needs without compromising on aesthetics, design, or functionality.
4. **Sustainable Practices:** In line with global environmental concerns, ALUMATE is dedicated to sustainable manufacturing, reducing waste, and promoting recycling in all its operations. Additionally, Alumate is Global GreenTag GreenRated emphasising our commitment to the environment.
5. **Technical Expertise:** ALUMATE's in-house team of experts provides unparalleled technical support, from initial consultation to project completion, ensuring clients' visions are brought to life seamlessly.
6. **Quality Assurance:** Implementing rigorous quality checks, ALUMATE guarantees that each product meets the highest standards of durability, strength, and resilience, ensuring longevity and performance.
7. **Collaborative Approach:** ALUMATE works closely with architects, builders, and designers, fostering a collaborative approach to ensure that each project benefits from shared expertise and achieves the desired outcome.
8. **Continuous Research & Development:** In a constantly evolving industry, ALUMATE invests heavily in R&D, ensuring that they remain at the forefront of technological advancements and market trends.
9. **Customer-Centric Service:** At the heart of Alumate's operations is its unwavering commitment to customer satisfaction, ensuring timely deliveries, responsive service, and post-installation support.
10. **Non-Combustible:** All ALUMATE Products and Systems have been tested and certified to AS1530.1 as a Non-Combustible material.

Notable Projects:

Oxford Village, Surry Hills, 2005



Architectural Specification: Oxford Square, an emblem of urban renewal and street dining vibrancy, sought to seamlessly integrate its rich history with a modern, chic aesthetic.

Challenge: ALUMATE was entrusted with the critical task of enhancing the external facade and supplying the louvre blades for this iconic project.

External Facade Cladding: Our aluminium cladding effortlessly matched the project's design intent, providing a contemporary look while ensuring long-term durability and weather resistance.

Louvre Blades: ALUMATE's louvre blade systems were incorporated to optimise airflow, offer shade, and elevate the building's aesthetic appeal. Our blades, while functional, also contributed significantly to the architectural charm of Oxford Square.

Result: Through close collaboration with PTW and Design Clarity, ALUMATE's solutions played an instrumental role in bringing the Oxford Square vision to life, reaffirming its place as a buzzing local social space and a testament to modern urban design.



Prime Macquarie Park, NSW (2019)



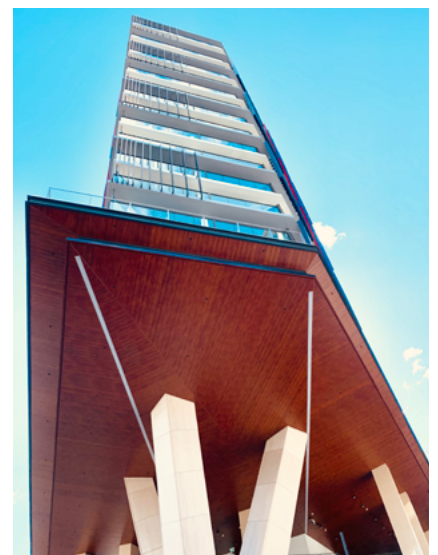
*Architect: PTW Architects
Builder: Southpac Constructions by JQZ*

Challenge: Originally, the project specifications predominantly featured timber due to its aesthetic appeal, aligning with the architects's vision for a design that harmonized with the natural surroundings. However, subsequent revisions in the National Construction Code mandated the use of non-combustible materials, posing a significant challenge: mainly how to retain the aesthetic richness of timber without compromising on safety regulations.

Accomplishment in Soffit Cladding: The architects were resolute; only the finest and most authentic wood-grain finish would fulfill their design aspirations, maintaining the visual coherence and natural elegance initially envisioned. This stringent requirement for high-quality and aesthetically superior finishes is where ALUMATE's unparalleled expertise and innovative solutions came to the fore. ALUMATE rose to the challenge, meticulously crafting finishes that mirrored the nuanced textures and rich tones of real wood, thereby preserving the architect's original aesthetic vision while adhering to the strict safety mandates. This project epitomizes ALUMATE's commitment to achieving architectural excellence, blending innovation, aesthetics, and safety to transform visionary designs into reality.

Results: ALUMATE's meticulous attention to detail and commitment to innovation were crucial in breathing life into this architectural masterpiece, underscoring our capability to transcend conventional boundaries and deliver excellence in every project.

Prime Macquarie Park, situated in the thriving hub of New South Wales, stands as a testament to ALUMATE's innovative applications of aluminium with a wood-grain finish, marking the first instance of its large-scale implementation.



Rocky Point Road Childcare, Kogarah, NSW (2020)

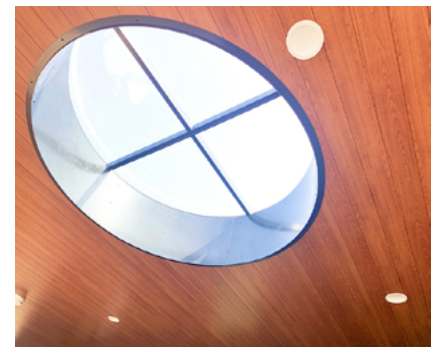


ALUMATE is ideal for new buildings, renovations, and replacement of combustible materials for both residential and commercial applications. As the material of choice when the highest performance is required, ALUMATE has become the brand for childcare centres and government projects alike.

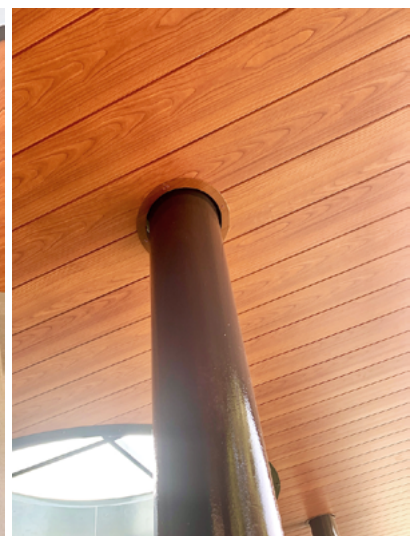
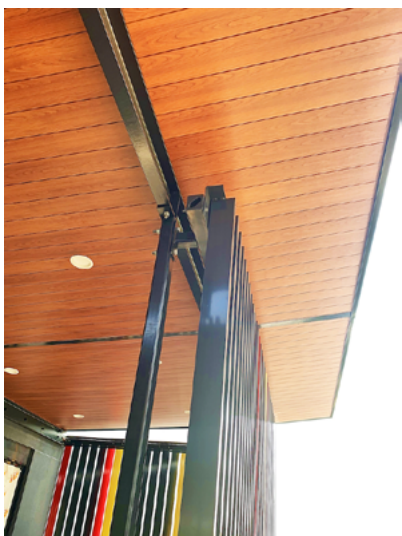
Architect: PTW Architects

Client: Rocky Point Road Childcare

ALUMATE not only creates a building of superior appearance but can also contribute acoustically and thermally with the right design and application. With modern finishes that are long lasting and the most realistic timber look, ALUMATE is the perfect non-combustible product to suit any environment and type of building.



Designed by PTW Architects, Rocky Point Road Childcare required the highest non-combustible fire rated material for the extensive feature timber look ceiling for the Kogarah City Council of New South Wales Australia. ALUMATE was selected as the product of choice for its certified AS1530.1 non-combustible rating and quality finish that offers the impression of the natural warmth, appeal, beauty and richness of architectural wood grain finishes while providing the highest level of performance.



Voyager Malt House, Whitton, NSW (2021)



Architect: Design Studio
Builder: Flagbrook Constructions Pty Ltd

ALUMATE is the ideal solution to realise architects' visions with precision and quality. Our product delivers an unmatched, high-quality wood grain finish while utilising non-combustible materials, ensuring both aesthetics and safety.

ALUMATE Advantages:

- **Non-Combustible:** Offers peace of mind with materials designed to resist combustion.
- **Low Maintenance:** Designed to withstand the elements with minimal upkeep, ensuring longevity and consistent aesthetic appeal.



- **Durability:** Constructed with premium materials to endure the demands of both time and environment.
- **Easy Installation:** Features a Concealed Lock-in fixing method, enabling swift and secure installations.
- **Advanced Design:** Comes with a refined clipping system for enhanced structural integrity and aesthetic coherence.

Cedar College, Unanderra, NSW (2022)



*Architect: HS Architects
Builder: Gledhill
Installer: TC Built*

Project Brief:

Known for its high quality education and exceptional facilities, Cedar College has established itself as an exquisitely modern college. Set at the base of Mt Kembla, with spectacular views of the mountain. Cedar College is not only surrounded by gorgeous surroundings, but is continuously looking towards future developments such as the new state of the art classrooms set to be unveiled in early 2023.

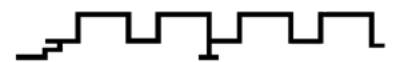


Establishing the colour and finish was crucial to the unique castellated design of the project. The architect's idea to combine sandstone with a timber-look not only added character to the façade but also softened the appearance of the building.



Design Challenges:

However, the challenges of the project was to select a product that can achieve a high quality finish matching the identity of the college. The builder, Gledhill, identified ALUMATE cladding systems as being capable of providing a sublime finish in addition to achieving the warmth which the designer desired.



Solutions:

ALUMATE utilises the latest Italian wood grain system and employs only the highest quality powders, inks, and equipment to create remarkably realistic wood-grain finishes. Furthermore, the heat transfer technology improves the durability of the surface coating which provides longevity to the product appearance.

ALUMATE's ALC18025 'American Oak' was selected as the castellated cladding providing a soft, natural timber tone whilst also acting as a secondary skin, decreasing the effects of the weather on the building with little maintenance required.

WSU, Bankstown Campus, NSW(2022)

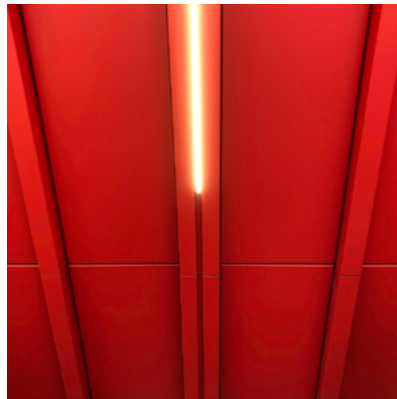
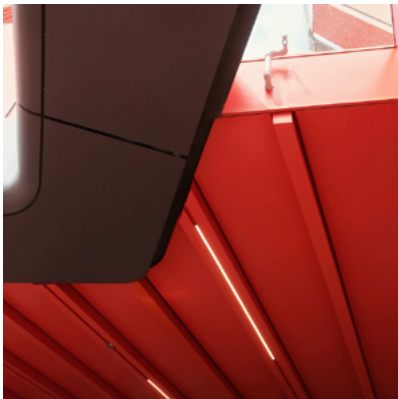
Architect: Lyons/HDR Architecture

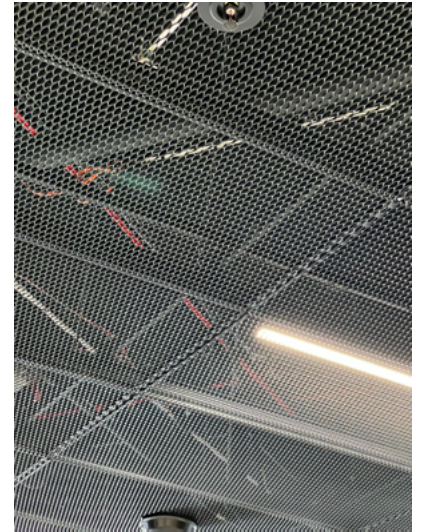
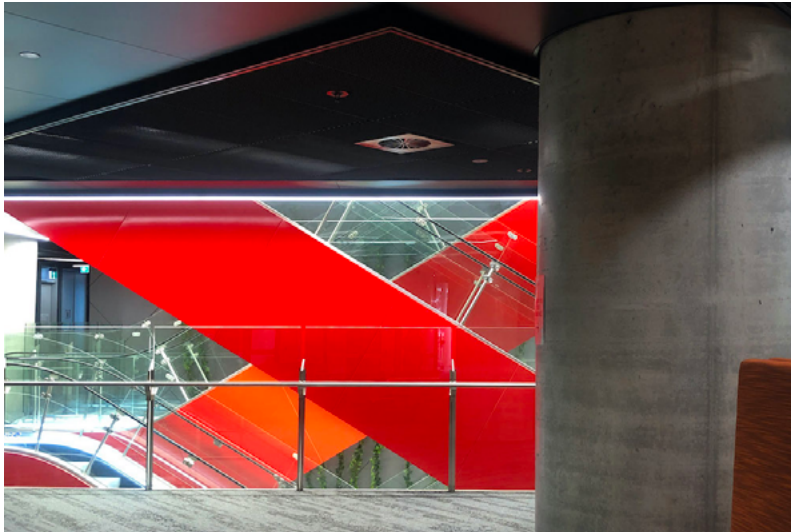
Builder: Built

Project Overview: Western Sydney University, a paragon of academic brilliance, sought an architectural aura that resonated with its global reputation.

ALUMATE's Role: Championing this architectural vision, ALUMATE became the preferred choice for the university's external soffit cladding, internal mesh ceilings, and seamless lift panels.

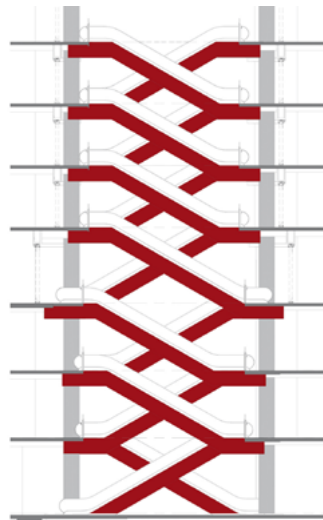
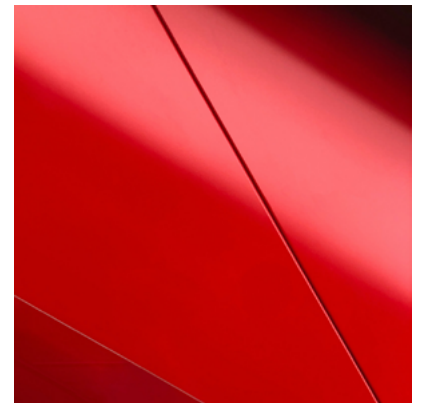
External Soffit Cladding: With the precision and aesthetic appeal of our aluminium cladding, we provided a robust and visually striking exterior that echoed WSU's stature.





Internal Mesh Ceilings: These intricately designed ceilings, synonymous with architectural elegance, were tailored to amplify the university's internal spaces, promoting both aesthetics and functionality.

Seamless Lift Panels: ALUMATE's seamless lift panels not only accentuated the elevators' sophistication but also supplied enhanced durability, exemplifying our commitment to quality and design.



Outcome: In close collaboration with HDR and Lyons, ALUMATE's contributions have sculpted a contemporary campus landscape, fostering an environment of inspiration and innovation.

“ *Very impressed with the ease of installation and was extremely satisfied with the outcome making ALUMATE the perfect choice for this project.* **”**

- Buildup Interior

PHIVE

Parramatta Square, Sydney (2022)

Architect: DesignInc
Builder: Built

Embedded within the heart of Parramatta's civic centre, ALUMATE's signature Bolt and Track profile system serves as a testament to both innovation and cultural reverence. This specially crafted internal batten system in Parramatta Square is more than just a ceiling; it's a narrative in design.

Versatility that Celebrates Heritage:

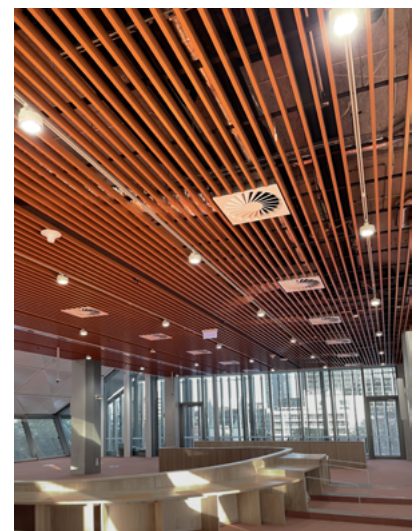
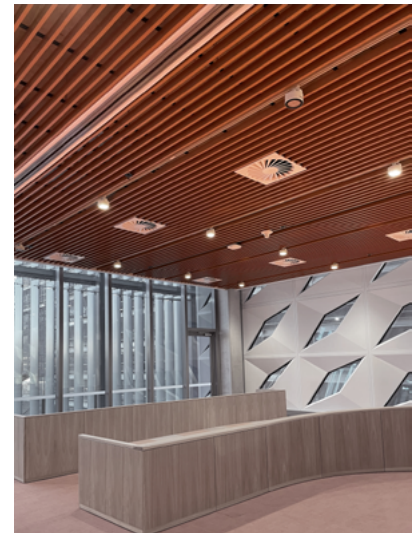
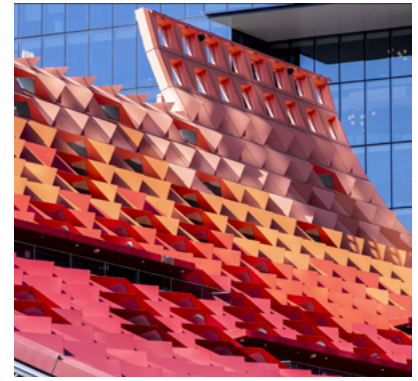
The unmatched flexibility of ALUMATE Ceiling System empowered architects to craft a ceiling that pays homage to the city's rich cultural tapestry. With a vibrant red slatted finish, the design not only promotes social bonding and cultural dialogues but also embodies the warmth and evolution of Parramatta's identity through its authentic wood-grain appearance.

Lightweight Yet Impactful:

ALUMATE's lightweight solutions are at the forefront of design innovation for DesignInc. They grant designers the freedom to actualise their visions, ensuring that the character and ethos of Parramatta's burgeoning community and civic centre are truly reflected.

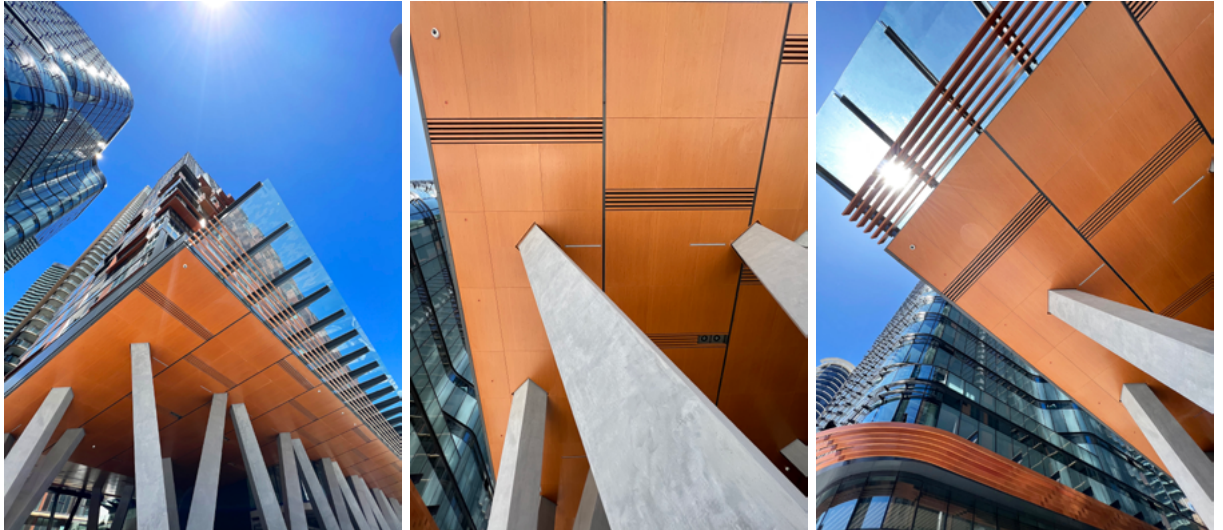
Beyond Aesthetics - A Pinnacle of Durability & Safety:

ALUMATE is not just about appearance. It's about enduring quality. Our profiles stand tall against the elements, boasting robust weather resistance. Installation is a breeze, thanks to our user-friendly systems that still delivers a stunningly realistic natural timber facade. Above all, safety is paramount. ALUMATE meets and exceeds the most stringent fire requirements, making it the preferred choice for Developers, Architects, Designers, Government bodies, Councils, and Builders.



Eighty-Eight, St Leonards, Sydney (2021-2023)

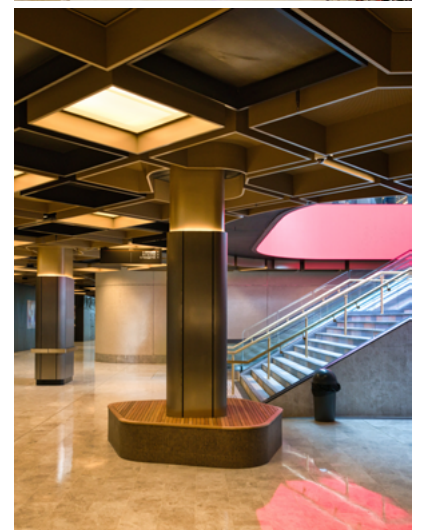
Nestled in the rejuvenated suburb of St Leonards, just 15 minutes from Sydney's CBD, stands the impressive Eighty-Eight development. This iconic structure, by JQZ, boasts 650 units and 30,000sqm of commercial and retail space, offering unparalleled luxury, transport accessibility, and the pulsating vibrancy of retail and dining precincts. While upper-floor apartments provide stunning views of Sydney Harbour and the skyline, the ground level is a hive of activity and elegance.



*Architect: PTW Architects
Developer: JQZ*

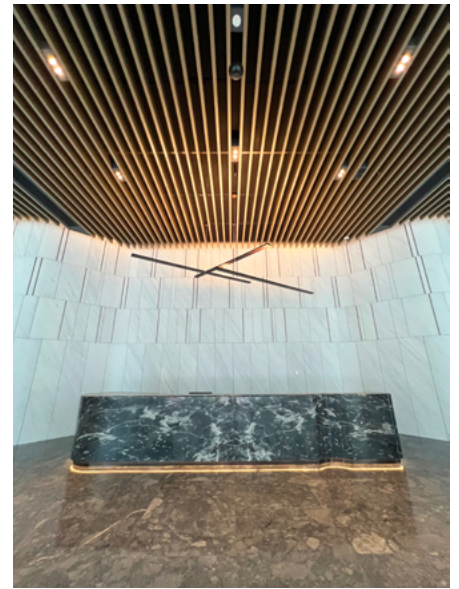
ALUMATE's Involvement: The architectural blueprint by PTW Architects for Eighty Eight was a fusion of contemporary and classic aesthetics, predominantly featuring concrete accentuated by metallic and wooden elements. ALUMATE's involvement was pivotal in sourcing the perfect soffit and ceiling cladding, which would reflect this design vision.

Customisation & Versatility: ALUMATE's aluminium cladding range is celebrated for its adaptability, compliance, and bespoke finish options. This made it the ideal choice for Eighty Eight. Our team worked closely with the architect and developer to customise solutions across multiple applications. From soffit cladding that mirrored luxurious timber boards to unique aluminium ceiling cladding cubes, every piece was tailored to enhance the precinct's identity.



Precision & Collaboration: Our fabrication, logistics, and design teams coordinated seamlessly with onsite contractors, ensuring accurate and hassle-free installations. With intricate designs and varying configurations, it was paramount that every installation reflected our commitment to precision.

Quality & Safety: Every ALUMATE product undergoes rigorous testing to ensure optimal functionality and the highest quality standards. Our cladding is certified non-combustible to AS1530.1, promoting safety without compromising aesthetics. While our realistic timber-look finishes offers natural charm, our cladding's durability, versatility in powder-coated and anodised finishes, and easy installation further elevate our product range.



The Eighty-Eight project exemplifies ALUMATE's prowess in delivering high-quality, customised solutions that align with a project's architectural vision. Our products, combined with our team's dedication and expertise, underscore our unparalleled capability to transform spaces while ensuring safety, durability, and aesthetic finesse. At ALUMATE, we don't just offer products; we offer experiences that stand the test of time.



Western Sydney International Airport, Sydney NSW

Architect: Zaha Hadid Architects, Cox Architecture and Multiplex

Builder: Multiplex

Product: Bespoke Canopy and Column Cladding



Image by Cox Architecture

Set to open its doors in January 2026 the Western Sydney International Airport is touted as the pinnacle of international travel in Sydney's west. Built with the purpose of servicing ten million passengers a year from the date of opening with possible expansions in the future it is a substantial undertaking and a boon to those in Sydney's western suburbs.

Challenge:

To realise their goal of a seamless and sustainable airport it was of the utmost importance that the canopies at the drop off points be fashioned of durable, sophisticated and environmentally conscious products as this would be the customer's first impression of the airport.

Solution:

To meet this need ALUMATE designed and fabricated multiple different exterior products while working closely with Multiplex to deliver a fantastic result. From the canopy trim to the underlying aluminium panels, column cladding and even to the stainless-steel bumper rail protecting the base of the canopy columns ALUMATE has endeavoured not only to provide enduring products but also ones that align with the environmentally friendly outlook of the designers.

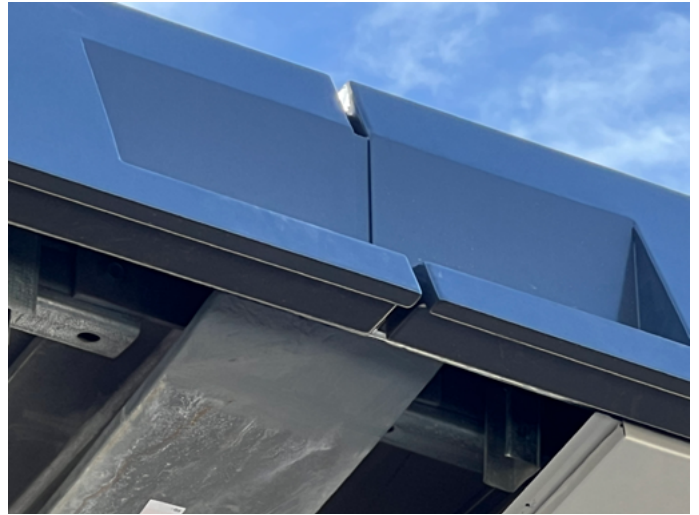
Result:

This ongoing project highlights ALUMATE's considerable bespoke fabrication capabilities and with out certified GreenTag GreenRated product the client can relax knowing that the product was produced in a sustainable fashion and is built to stand the test of time.





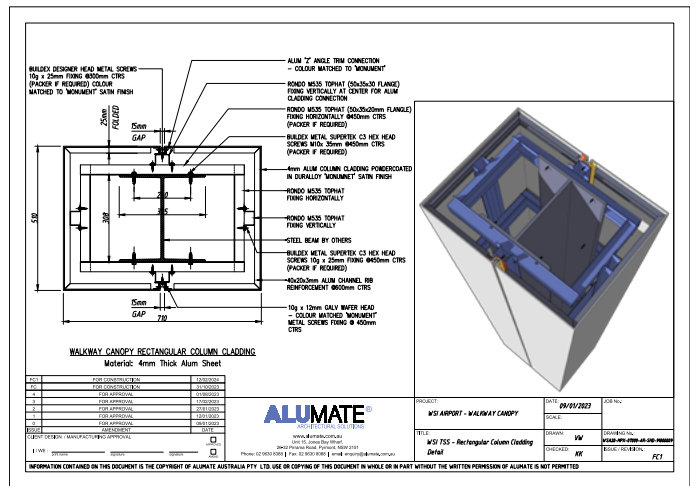
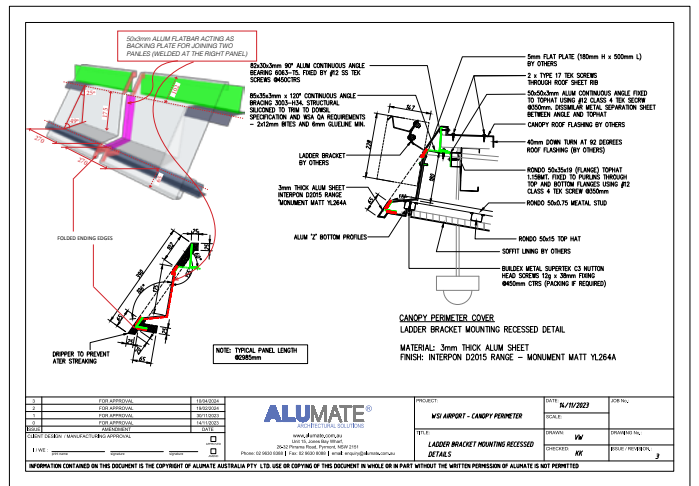
Under Construction



Under Construction



Under Construction



Civic Heart, Perth WA (2024)

Developer: Finbar

Architect: SS Chang Architects

Builder: Hassen Pty Ltd

Product: ALC16515 Cherry and ALC15025 Cherry

The Civic Heart, Perth's tallest residential building is located in a centralised location near various schools, shops, retail outlets and of course the picturesque Swan River. Developed by Finbar this soaring construction is set to contain 308 apartments along with various facilities on the ground floor. The Civic Heart designed to be a beacon of excellence in South Perth.

Challenge:

Located less than five hundred metres from the beautiful Swan River and less than ten kilometres from the coast environmental durability was of paramount importance when selecting a product for the ground floor soffits and balcony walls. Desiring a natural look the design was put forward to utilise a timber-look material to provide a sense of warmth to the ground floor facilities.

Solution:

As a result, the architect selected ALUMATE as the preferred product for this application due to its intrinsic non-combustibility and its durability in the face of environmental impacts like coastal salt air. ALUMATE products are manufactured in durable aluminium which is naturally corrosion resistant and will not rust. Additionally, the wood-grain powder coating on ALUMATE successfully mimics the look of real timber allowing it to both fulfill the requirements of the BCA and the design intentions.

Result:

We are confident that the products we have supplied for the lower levels of the Civic Heart will endure both the test of time and the elements allowing the residents and the visitors to experience the quality of our products integrated with the impeccable design of Perth's tallest residential building.



Photo by Finbar



Quality Assurance:

ALUMATE ensures strict quality control in every phase of production. We have a range of warranties catering to individual projects underscoring our commitment to excellence and durability.

Why Choose ALUMATE?

Our long-standing reputation in the construction industry is testament to our commitment to quality, timely delivery, and client satisfaction. Partnering with ALUMATE ensures your projects benefit from the latest innovations in aluminium and metallic systems and a dedicated team ready to support your project's unique demands.

Contact Information:

ALUMATE Australia Pty Ltd

Unit 15 Jones Bay Wharf, 26-32 Pirrama Road, Pyrmont NSW 2009

Phone: 1300 654 795

Email: enquiry@alumate.com.au

Website: www.alumate.com.au

